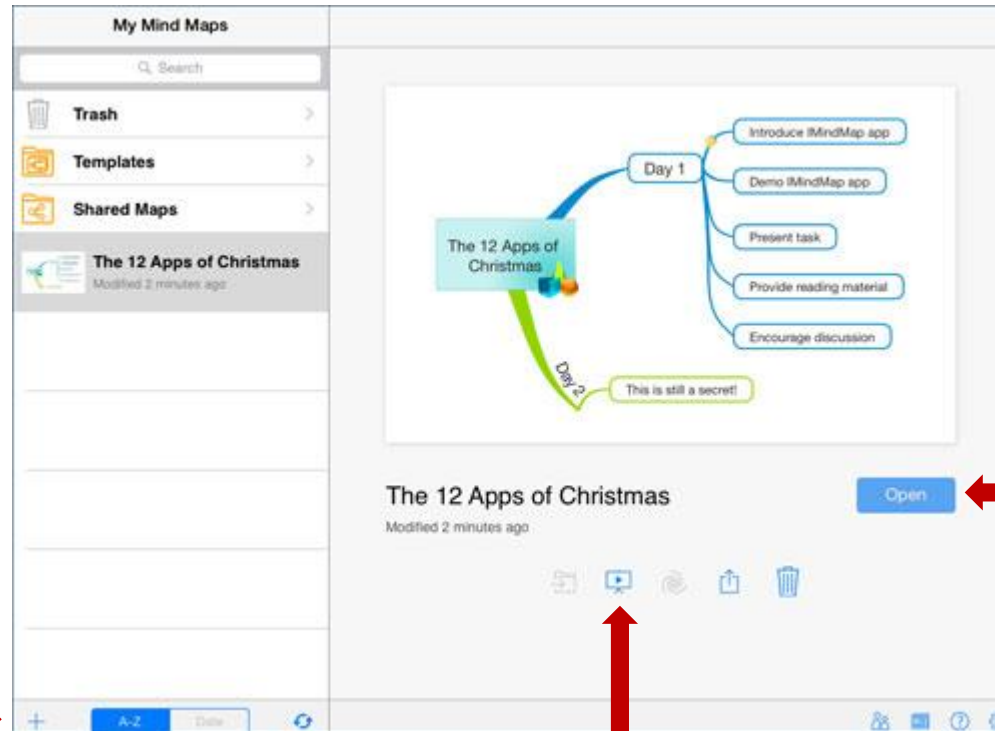


Quick Guide to Getting Started with iMindMap App



Provided as part of The 12 Apps of Christmas initiative (#12appsDIT, Dec 2014)

iMindMap Interface Explained



The maps you have created will be listed here. Tap on any of them to see a preview of it in the space opposite

Tap 'open' to open the selected map for editing

Click on the '+' on the bottom left of the iMindmap interface to create a new map

Tap to open your finished map in presentation mode

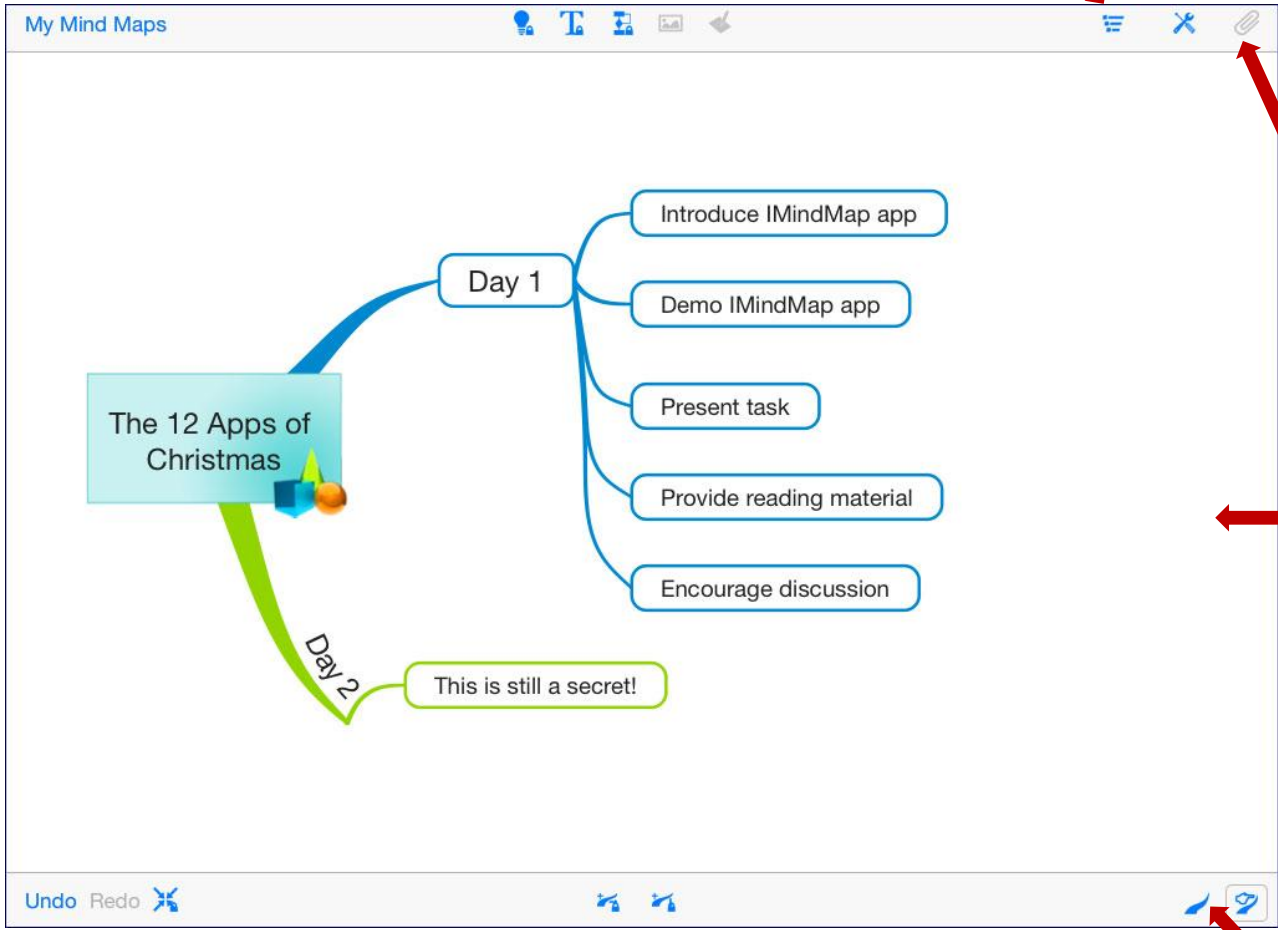
Tap to send invitations to others to view your map

Editing Tools Explained

These 3 features in blue are locked in the free version of this app

Provides a list view of your map

Edit the settings of your icons, branches, text, & add a boundary to your map



Add text notes, record audio clips & add links

Pinch the screen to zoom in and out. This allows you to create really large maps yet work comfortably on sections of it at a time

Choose between drawing freehand or not

How to Draw a Branch and Nodes



When you click on either the map's central image (which you are prompted to choose when you create a new map) or on any branch or node, these on-screen editing tools appear. Each coloured segment does something different for you and hold and drag from each one separately to activate it.

Red: Draws a new branch

Orange: Draws a branch that has a node at the end of it

Blue: Repositions the branch or node that you have drawn using the red and orange tools

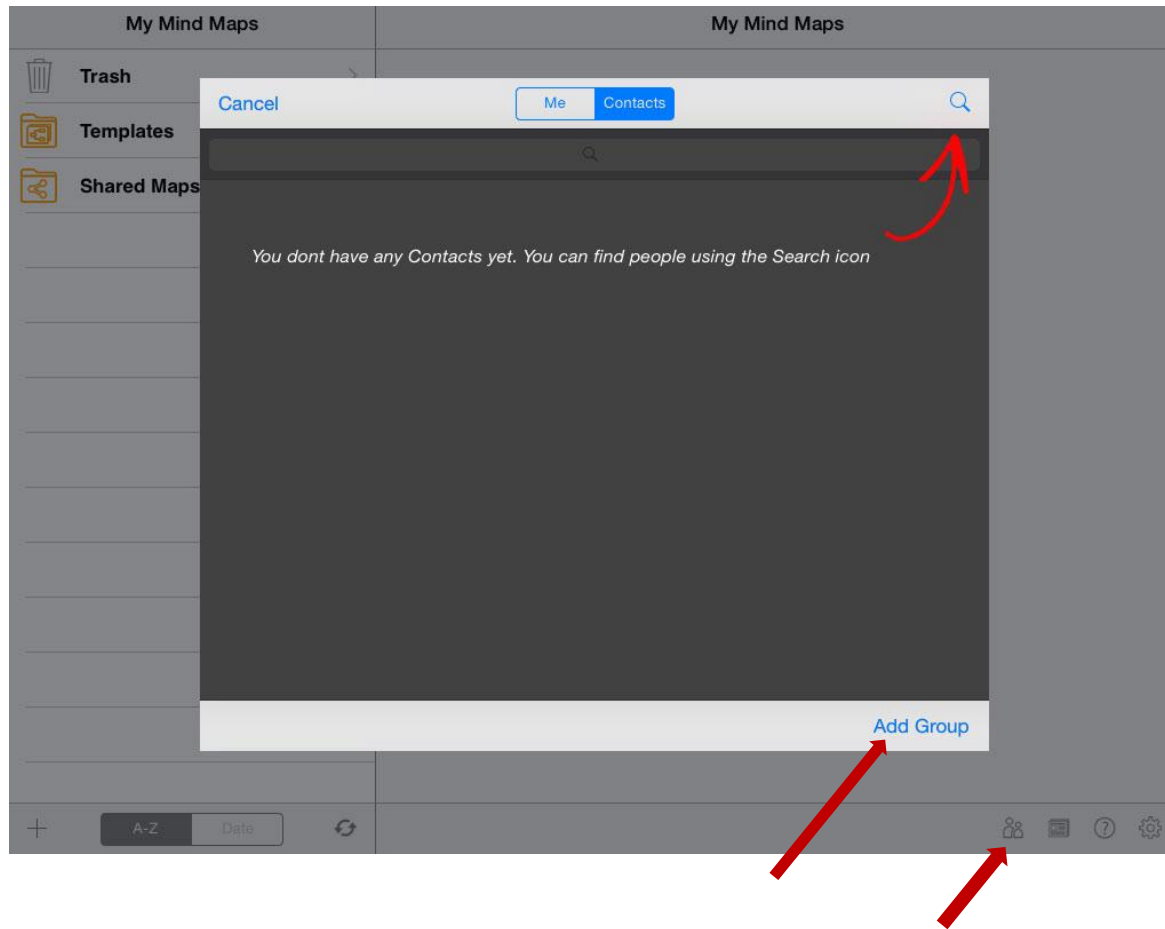
Green: Draws a dotted link between two selected points indicating a relationship between them

Presentation Mode



Tap the presentation icon on the map preview to see your finished map looks in presentation mode (see slide 2). Options to view notes, listen to audio clips & take web links are provided. Swipe to work through the different screens. The presentation can also be viewed on full screen without the thumbnails. Project onto a large screen by connecting the tablet to a computer and projector.

Inviting contacts and Creating Groups



Tap these options to search for and invite colleagues to view your mind maps. Then organise your collaborators into groups.